

CROWN

SC 5200 SERIES



...FOR TOTAL FLEXIBILITY

Whether you're in manufacturing, wholesale, retail, transportation or another sector, increasing demands for productivity and profitability require a whole new level of *adaptability* — and that's just what you get from the **Crown SC 5200 Series**.

The SC 5200 Series is engineered and manufactured to deliver exceptional results in:

- Flexibility of use across multiple applications
- On-board intelligence for maintenance and use optimization
- Built-in monitoring and control of key performance parameters
- Operator comfort and productivity
- Low total cost of ownership with high quality and extreme durability
- A range of models and attachments to more exactly fit your specific needs

It all adds up to the Crown SC 5200 Series: the new three-wheel power tool offering the highest level of flexibility at the lowest overall cost of ownership.



THE MULTIPURPOSE WORKHORSE...

...TO DO IT YOUR WAY

These multipurpose workhorses give you the power, maneuverability, and industry-leading dependability to do virtually whatever you need to, day after day, year after year. In and out of trailers, performing dock and ramp work, and handling loads from staging and transporting to put-away, the SC 5200 Series lets your operators do more in less time.

The power to adapt ▶

Ramp work is never an uphill battle with Crown power:

- 36v or 48v AC traction
- Intelligent control with Access 1 2 3® technology
- Robust Crown motor with powerful torque
- e-GEN® braking for enhanced reliability and lower maintenance
- Crown's ramp-hold feature helps keep your position



◀ The ultimate utility player, dock to stock

Warehouse managers appreciate one truck that can do it all — dock work, transporting and stocking.

- AC drive and lift systems for powerful, efficient operation
- Intrinsic Stability System® promotes confident driveability
- Superior visibility and maneuverability
- Optional Quad Mast, offering higher lift in a short package



Working in the tightest spaces ▲

The SC 5215 gives you additional flexibility to maneuver, with:

- Ability to work in very limited space, including 10-foot aisles
- Sufficient battery power with lower battery cost
- Ample capacity with a big-truck feel

Shortest truck in the industry — ultimate maneuverability.



Do more with attachments ▲

All SC 5200 Series models accept a wide range of attachment options, enabling an even greater range of utility.

- Side shifters, clamps and more
- More mass in the counterweight means more confidence in the driver's seat
- Optional fingertip hydraulic controls can improve load handling efficiency

Rack up ▼ savings

The SC 5200 Series can easily be configured for drive-in rack applications, allowing you to:

- Optimize your space
- Lower warehouse cost per pallet
- Decrease storage and retrieval time



LEARN MORE



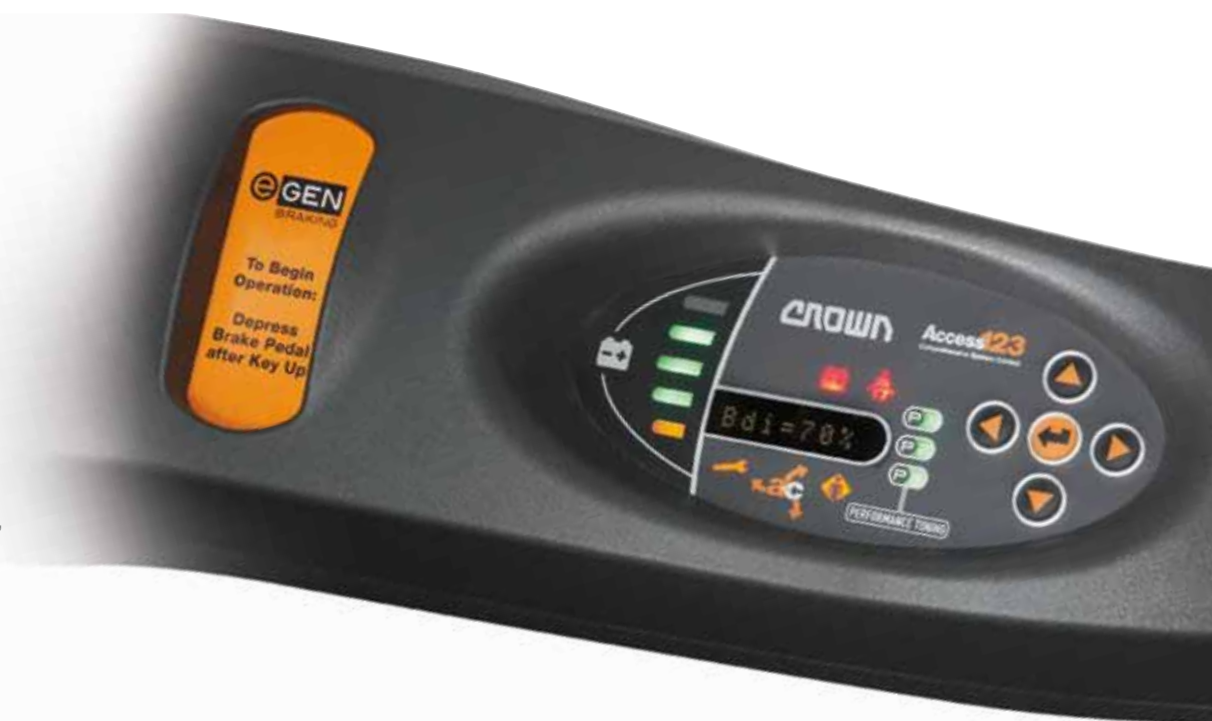
crown.com

INTEGRATED INTELLIGENCE, TO WORK SMARTER

Any successful operation depends on individual members that share real-time information to optimize performance. That's the perfect description of the SC 5200 Series.

Brains behind the beige

Access 1 2 3[®] Comprehensive System Control is like nothing else on the market, giving operators exceptional confidence through real-time monitoring and management of traction, braking, steering, hydraulics and other key systems. Because the truck is constantly "thinking" about all these factors, operators can concentrate on their task at hand. The system also provides easy-to-use on-board diagnostics to quickly pinpoint issues and help keep you up and running.



An evolution in power

The SC 5200 Series features tough drive units and powerful AC motors

that are engineered and manufactured by Crown, ensuring superior performance and reliability for the life of the truck. The integration of true Crown components optimizes power and enables the full-motor braking of our unique e-GEN[®] system.

e-GEN[®] braking gives you an edge in performance, service and cost of ownership by eliminating the traditional friction brake.

- Variable motor braking, specific to conditions
- Reduced maintenance (fewer parts and wear points)
- Reduced pedal efforts
- Automatic parking brake
- Comprehensive two-year warranty



Crown gives you on-board "integrated intelligence" like no other. Our Access 1 2 3 Comprehensive System Control supports operators with automatic, real-time performance management and diagnostics. The Intrinsic Stability System[®] delivers rock-solid performance in multiple applications.

Lift your productivity

Crown's integrated AC hydraulic system will increase your productivity with an efficient use of power featuring:

- Faster lift speeds that can help maximize productivity
- On-demand steering that lowers noise levels
- A single motor designed for improved efficiency

Intrinsic Stability System[®], built-in confidence

With over four decades of innovation in counterbalanced electric lift trucks, no one keeps operators more secure or productive than Crown. With the SC 5200 Series, stability isn't an afterthought, or yet another worry for the driver, because our Intrinsic Stability System proactively supports safety and efficiency.

Travel speed control:

the SC 5200 Series automatically limits travel speeds based on load weight, lift height and steer angle

Tilt interlock:

when forks and mast tilt more than two degrees forward, this feature stops them from rising above free lift

System controlled hydraulic speeds:

the hydraulic system automatically limits tilt, increasing vehicle stability

More mass where it counts:

heavy use of steel, plus a stability-enhancing counterweight that exceeds required standards

Intelligent ramp speed control:

keeps speed constant and automatically maintains hold on inclines



Cornering speed control:

with its on-board intelligence, the SC 5200 Series knows the angle of the steer wheels and the speed of the truck — and uses this information to adjust the speed in turns.



BETTER ERGONOMICS, BETTER ECONOMICS

It's simple: Your operators don't just drive your trucks, they drive your results. That's why Crown lift trucks are designed to optimize driver comfort and performance.

The SC 5200 Series features easy entry and exit to help operators move quickly and safely.

Visibility is significantly enhanced through multiple design considerations, from operator-forward seating to superior mast configuration. Controls are placed within easy reach, minimizing operator arm movement and stress. There is no parking brake to remember (or lever to get in the way) because it's applied when the truck comes to a complete stop.

Crown's FlexSeat™ delivers a smooth and comfortable ride by providing operators a flexible seat back that moves with the operator, a 10-17% wider seat and industry-leading durability.

- Unique polymer spring allows the operator seat to "flex" backward and forward
- Passive suspension system of flexible mesh and high-density foam absorbs and dissipates shocks and vibrations
- Virtually eliminates pressure points found on ordinary "foam and steel" seats
- Replaceable industrial seat cover



Hydraulic controls within reach

Operator comfort is further enhanced with hydraulic control levers that are easy to reach, identify and activate:

- Armrest that offers comfortable support
- Manual controls are easy to reach and require low effort to activate
- Tactile feedback allows for easy identification of each function on standard manual hydraulic controls
- Optional Tilt Position Assist (TPA) stops the forks in a horizontal position when requested
- Optional fingertip or dual-axis joystick hydraulic control levers with directional travel and horn integrated into the armrest



Manual Control Levers



Dual-Axis Joystick Control Levers



Fingertip Control Levers

Easy entry/exit

Beyond industry leading comfort, the SC 5200 offers smooth entry/exit. This time saving benefit can improve operator productivity.



Visibly superior

Drivers benefit from enhanced forward, rearward, upward and downward visibility to see people, objects and equipment more easily:

- Cab-forward design places operator closer to the work
- Unobstructed view of forks and floor
- Visibility-optimized mast
- Low-profile, sculpted cowl
- Narrow, offset steering column
- Waterfall-design overhead guard for better upward sight lines



LESS TIME ON SERVICE, MORE TIME ON THE FLOOR

No one does more than Crown to simplify uptime management day to day, while providing durability and lasting value year to year.

Crown offers a unique combination of technology and toughness to maximize your lift truck ROI. From high-tech diagnostics to super-reinforced steel construction and original Crown-quality components, the SC 5200 is the lift truck with the reliability and durability to excel in a multitude of demanding applications and environments.

Every SC 5200 includes over 85 percent Crown-manufactured parts. Crown further proves its mettle with strong design and engineering, putting more steel where you need it most. You can count on Crown for years of reliable, cost-efficient use and low total cost of ownership.

Sturdy steel frame

The SC 5200 Series includes frame enhancements that hold up in the toughest applications:

- Solid 2" x 4" steel beams and 3/4-inch steel plate form the backbone of the truck
- Cross member support offers proven strength in tough applications

Steer axle keeps you rolling

Weak links often compromise the competitors' designs. But you won't find one on the Crown SC 5200 Series, which features a steer axle with:

- Cast-iron body, withstands the most abusive forces
- Sealed rack-and-pinion design keeps contaminants out
- Heavy-duty tapered roller bearings
- Sealed bearings, included with freezer package, for added protection

I-beam masts stand firm

Our rigid I-beam construction better resists longitudinal, lateral and torsional bending and twisting, thanks to:

- Interlocking I-beam design
- Rugged mast carriage
- Thicker steel for a stronger load backrest



On-board, on-site diagnostics

Our patented Access 1 2 3® technology is the integrated system that gives you instant, on-board diagnostics without the hassle of hooking up a handset or laptop.

The easy-to-understand display communicates event codes, while the built-in voltmeter can be used to pinpoint the origin of faults. Technicians can drive suspect components and test their functionality right through the display, eliminating the traditional, time-consuming process of swapping out components in trial-and-error testing. Access 1 2 3 is the common system used on all Crown lift trucks — so once a technician knows one truck, he knows them all.

The InfoPoint® system complements Access 1 2 3 with a Quick Reference Guide, on-truck component maps and information nuggets located throughout the truck. This eliminates the need for most service manuals, wiring diagrams and schematics, allowing technicians to more quickly diagnose and fix problems.

InfoLink®, a wireless data management tool, transfers truck data, giving managers performance-enhancing measurements like tracking OSHA compliance, truck impacts and energy awareness.

Insite™ Productivity beyond the truck

Crown provides the information options you need to optimize productivity and profitability:

The Crown Insite™ Productivity Suite is an exclusive set of data management tools that helps you collect, manage and use data about your trucks, operators, applications and fleets. We'll help you understand your data and turn it into actionable knowledge through Crown Insite solutions such as Access 1 2 3, InfoLink, FleetSTATS® and more.

Crown Insite helps you build knowledge that supports better decisions, increases productivity and saves money.



RANGE OF SOLUTIONS, ULTIMATE FLEXIBILITY

The Crown SC 5200 can be adapted to your applications with a range of models and an extensive selection of options.



SC 5215



SC 5225



SC 5245

	SC 5215	SC 5225	SC 5245	SC 5245	SC 5245
Truck Capacity (lb)	3000	3000	3500	3500	4000
Truck Length (in)	68.5	72.8	73	77.2	77.2
Minimum Aisle (in)*	82.8	87.1	87.5	91.7	91.7

* (add load plus clearance)



Battery roll-out comes easy

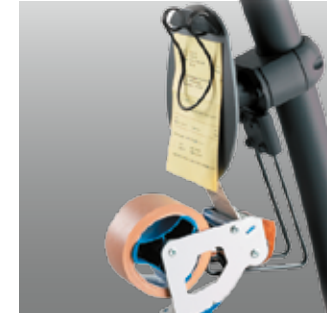
The SC 5200 battery roll-out option is a drop-in solution.

No need to order a specialized truck or an expensive option here. With the SC 5200, you get a truck that can be easily configured to meet your battery-changing needs. With the battery roll-out option, you can increase your uptime by changing batteries quicker and reduce manpower with a one-person operation.

Work Assist® Accessories and Integrated Options for Customized Solutions



WMS mounting bracket



Clip pad and hook



Operator fan



Shrink wrap holder



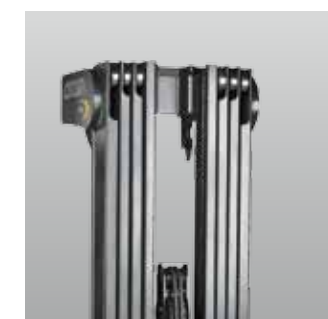
Extended steer column



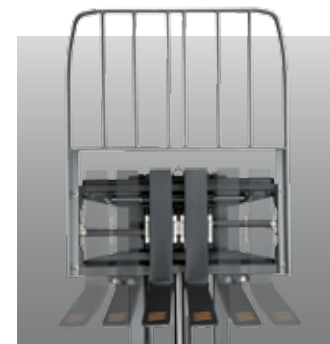
Mirror



Rear work light



Quad mast



Fork positioner



Steering spinner knob



Storage tray

From retail to manufacturing, the SC 5200 Series sets the standard for flexibility, productivity and long-term cost savings. Learn how this Multipurpose Workhorse can produce exceptional results for you.

Contact your local Crown dealer to schedule a demonstration.

ecologic™

Clean Environment. Smart Business.

Printed on elemental chlorine free and sustainably forested paper.

CROWN

You can count on Crown to build lift trucks designed for safe operation, but that's only part of the safety equation. Crown encourages safe operating practices through ongoing operator training, safety-focused supervision, maintenance and a safe working environment. Go to crown.com and view our safety section to learn more.

Crown Equipment Corporation
New Bremen, Ohio 45869 USA
Tel 419-629-2311
Fax 419-629-3796
crown.com

Because Crown is continually improving its products, specifications are subject to change without notice.

Crown, the Crown logo, the color beige, the ecologic logo, the Momentum Mark, Access 1 2 3, e-GEN, Intrinsic Stability System, Work Assist, InfoLink, FlexSeat, InfoPoint, Crown Insite and FleetSTATS are trademarks of Crown Equipment Corporation.

Copyright 2011-2013 Crown Equipment Corporation
SF18608 Rev. 10/13
Printed in U.S.A.